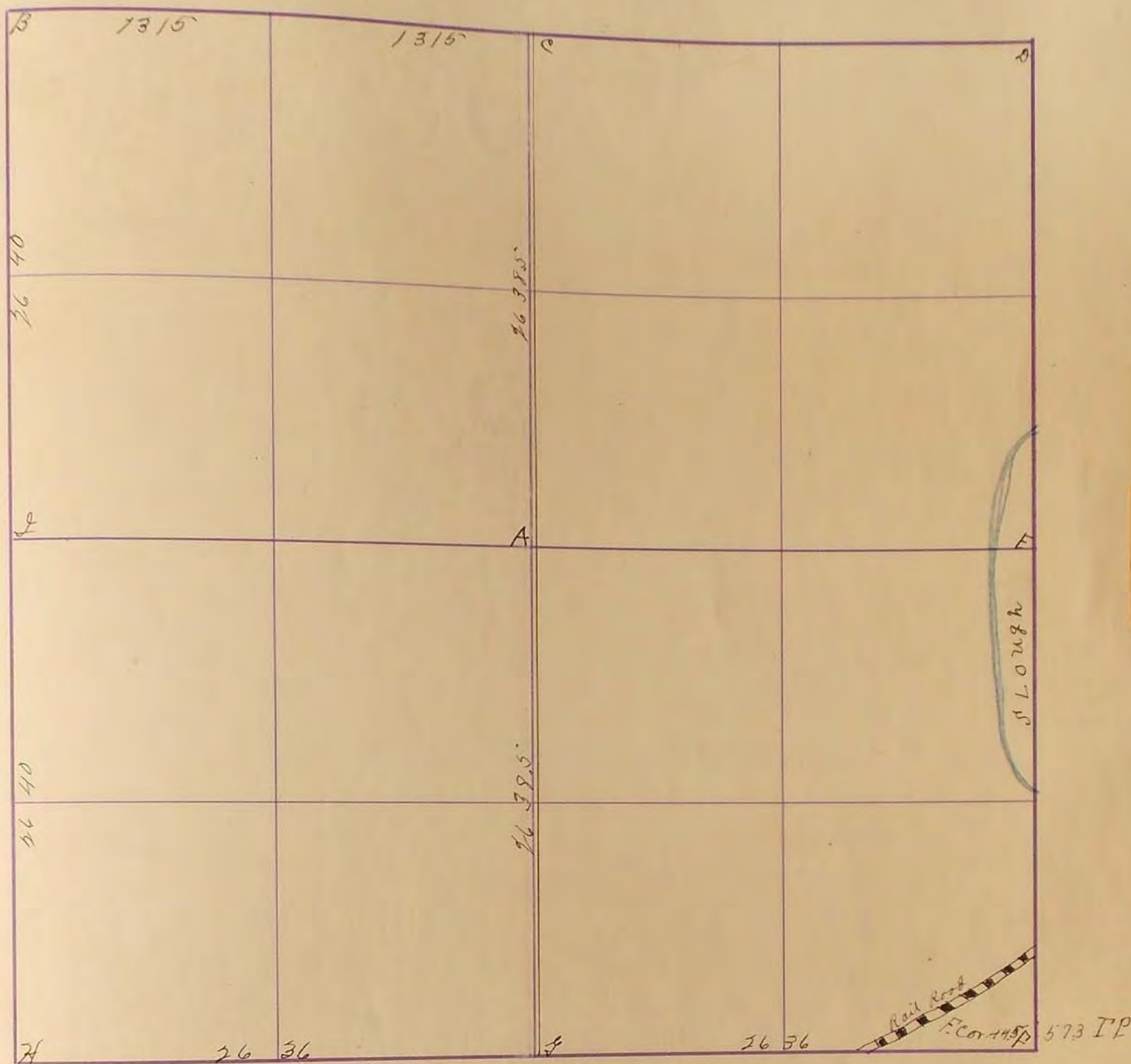


MURRAY COUNTY.

Section 14
 10798 McGill-Warner Co., Blank Book Manufacturers, St. Paul.

Township 106

Range 113



- 13 12
- 14 13
- 14 14
- 15 15
- 16 16
- 17 17
- 18
- 19
- 20
- 21
- 22
- 23
- 24
- 25
- 26
- 27
- 28
- 29
- 30
- 31
- 32
- 33
- 34
- 35
- 36

Oct. 17 - 1913

- A. Lime stone white
- B. Broken battle in grade 2 Rods from fence N & E
- C. Lime stone 16" long 6x6 on bottom
- D. Stone in grade (Cruicau)
- E. Cor. in slough
- F. R.R. fence 2 Rods N & H.
- G. Gray stone 6x8x12 in center of Grade
- H. Blue stone sharp on top 20" long small stone around
- I. Gray stone 10x12x20 on east side of road in edge of field on east side of line

Oct. 21 - 1919

J. H. Thooltinecraft

H. Fence cor. 29 E. + 27 N.

J. H. Thooltinecraft

H. Iron bolt 3/4" x 18" w/ 2" on top R.P., N40., P.P., SW. 59.30'

Sept. 1963

R.P., N40. T.P., NE. 49.90'

C. Assumed iron pin R.P., N40., P.P., SE. 47.6'

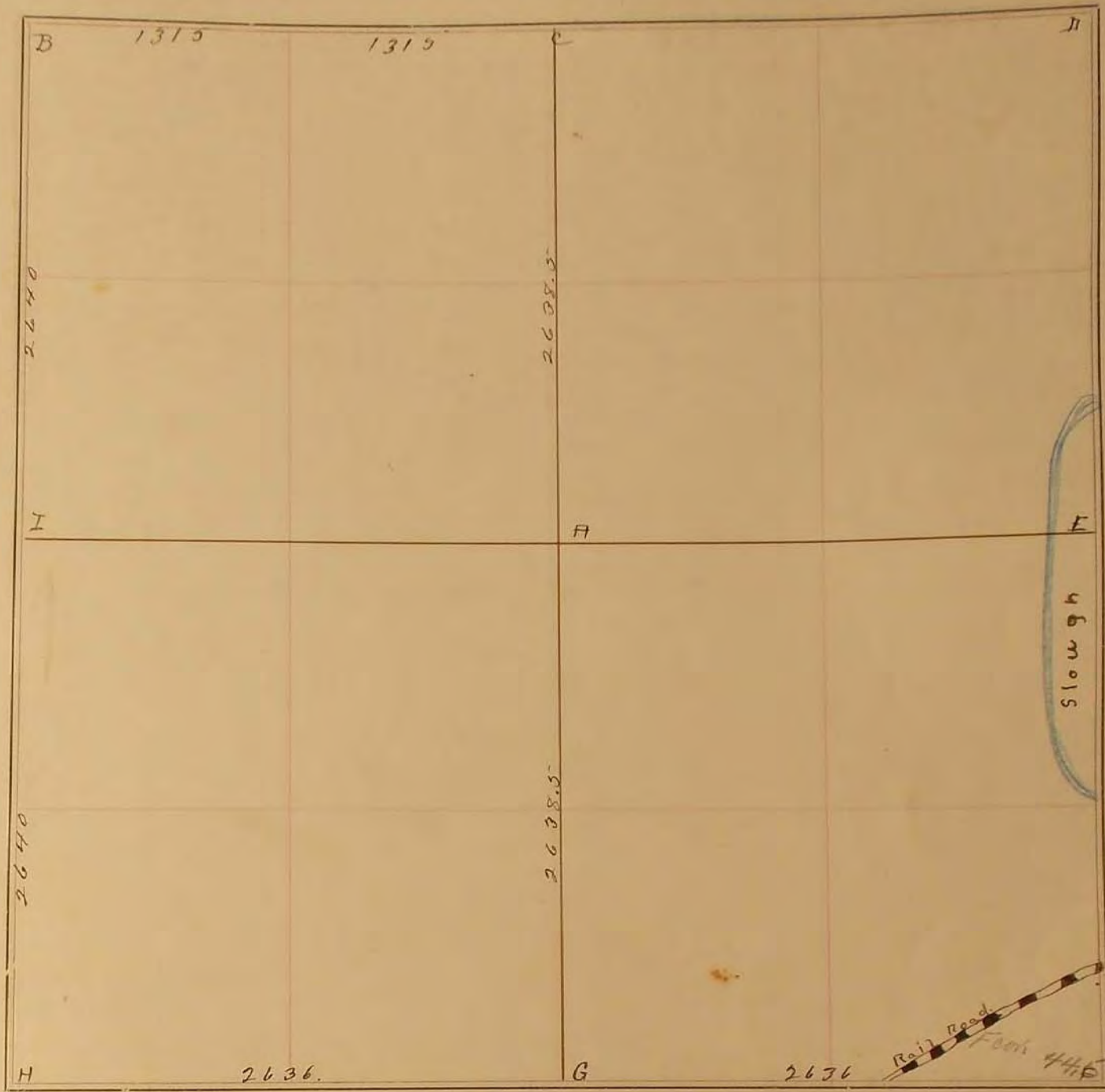
(Sta. 26 + 34.12.) R.P., Cor. Post, N. 38.6'

SURVEY No. 1315

Section 11

Town 106

Range 43



FIELD NOTES.

Oct. 17, 1913.

- A Lime stone white
- B Broken bottle in grade 2 rods from fence nre
- C Lime stone 16" long 6x6 on bottom
- D Stone in grade (previous)
- E Corn slough.
- F R.R. fence 2 rods ntw.
- G Grey stone 6x6x12 in center of grade
- H Blue stone sharp on top 20" long small stones around
- I Grey stone 10x12x20 on east side of road in edge of field on east side of line

Oct. 21, 1919

H. Fence Oct. 29 'E + 27' N.

J.W. Woolstenhulpe
J.W. Woolstenhulpe